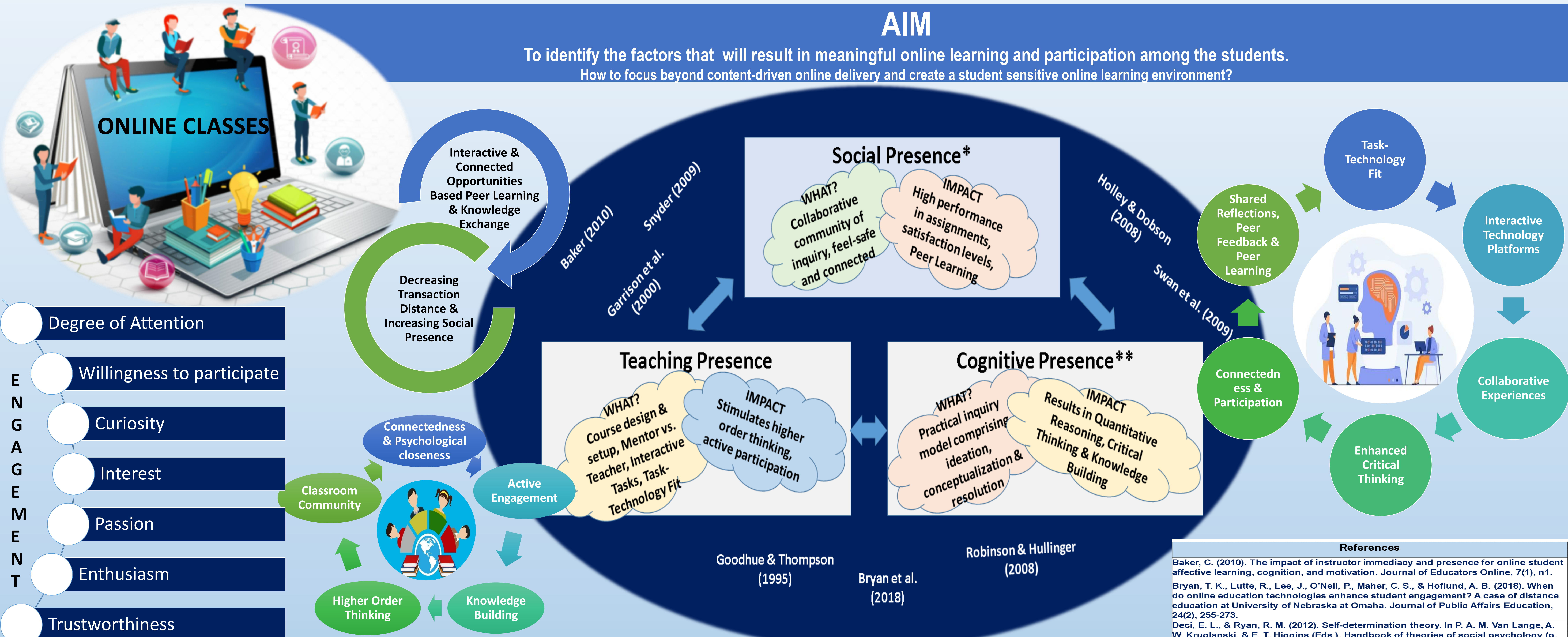


THEME: ACTIVE ENGAGEMENT OF STUDENTS IN ONLINE CLASSES

Debajyoti Dutta | Manpreet Singh | Nitin Saxena | Rajan Gupta | Sandeep Goyal

AIM

To identify the factors that will result in meaningful online learning and participation among the students.
How to focus beyond content-driven online delivery and create a student sensitive online learning environment?



Theory of Social Construction – Zonal of Proximal Dev (TSC) (Vygotsky, 1978)

Self-determination Theory of Motivation (Deci & Ryan, 2012)

Task-Technology Fit (TTF) (Goodhue & Thompson, 1995)

Overview – Theories/ Models

Community of Inquiry Model (CoI) (Garrison et al., 2010; Swan et al., 2009)

*Social Presence involves communicating emotions and attitudes as well as interpersonally connecting with others on online platform (Garrison et al., 2000)

**Cognitive Presence involves practical inquiry model, which moves students' thinking/discussion from a triggered event that makes them aware of some new idea, concept, or problem to exploration of the new information, integration of ideas, and finally to resolution of the problem (Garrison et al., 2000)